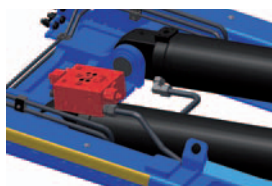
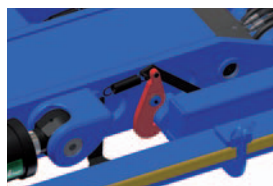


An even better hook lift

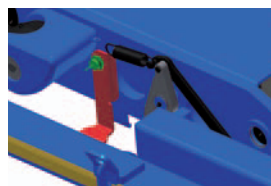
We were the first with low-built hook lifts, and now we are going even lower. With our new LA hook lift we have introduced a number of small improvements that together give a hook lift that is even lighter, even more environmentally friendly and more profitable.



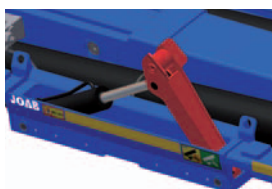
Combined regenerative, load retaining and quick lowering valve.



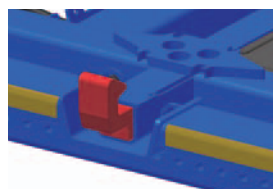
Mechanical centre pivot.



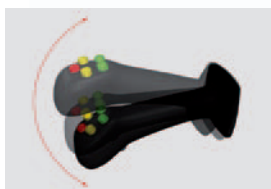
Electrically controlled hydraulic lowering brake.



Patented tipping torque amplifier for increased lifting force.



External hydraulic body lock.



Pneumatic, seven button control lever for tipping and shifting motions.

QUICK FACTS

- Swedish made.
- 17, 20 and 24 tons lifting and tipping capacity.
- Lower superstructure and operational weight give a 2 % increase in volume and weight load capacity.

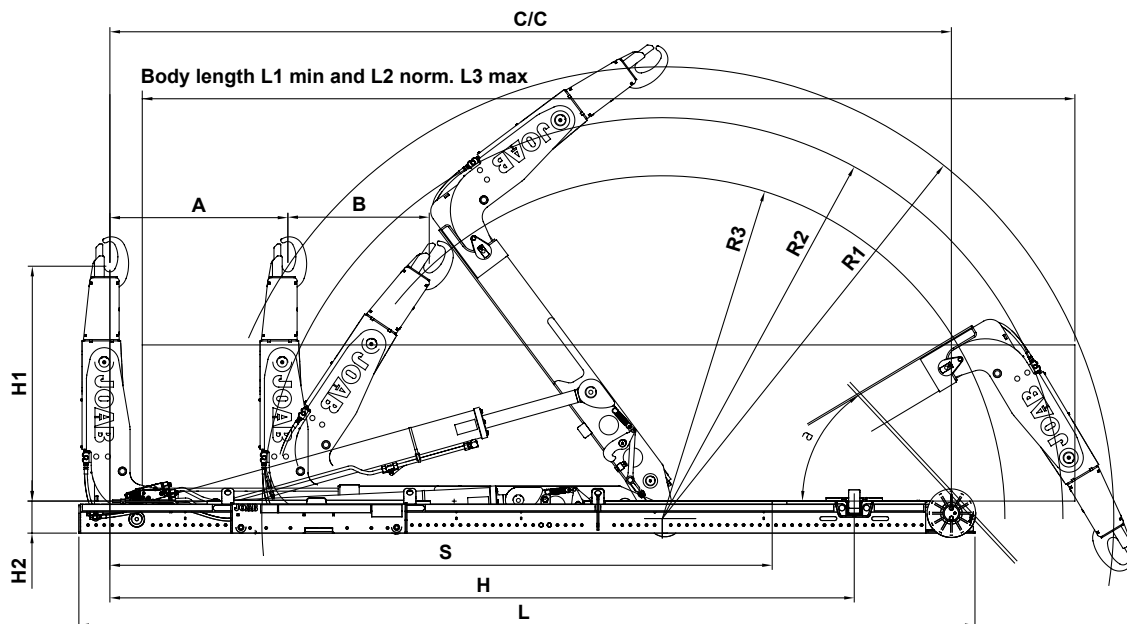
FACTS IN DETAIL

- Designed for 3 and 4 axle chassis.
- Lower weight because the hook lift is made of high-strength steel. Means greater payload.
- Designed for a high tipping angle even at long hook lifts. Makes releasing masses easier.
- Folding hook post gives lower loading angle which reduces the risk of loads shifting during loading.
- Offers a large variation of body lengths.
- The hook has safety catches as standard.
- Supplied with our patented tipping torque amplifier that increases the lifting force from the off and relieves the hook lift. The auxiliary lifting arms also have integrated rollers that enable horizontal friction free transfer of the load carrier.
- Automatic lowering brake that dampens the speed at the end of the lowering motion.
- Market adapted hook height, SMS, DIN etc.
- Robust construction for increased durability and long service life.
- Extensive equipment program designed for your specific needs.
- Prepared for the Cameleont swap system.
- Included in our FBS construction concept, which consists of corrosion resistant products (painted at assembly). FBS also means a shorter lead time.
- 70 % water based paint when painting.
- Gives you, the customer, many years of profitable ownership.

ADDITIONAL EQUIPMENT

- Quick tipping
- Quick lowering
- Quick operation
- Automatic cycle
- Front wall/Tool mounting
- Spreader flap deployer
- Radio control
- Crane body studs
- Internal hydraulic body lock
- Mechanical body lock
- Sleeves in front wall
- SMS ram
- Height adjustable hook
- Stainless steel oil tank
- Tipping hydraulics
- Hydraulic socket in hook post
- Sensor for short body

Technical Data sheet



					Dimensions mm				Body length mm			
	Type	Weight Kg	Pressure Bar	Tipping angle α°	C/C	L	Hydraulic lock	Radii R1/R2/R3	Shortest L1	Longest with min. overhang L2	Longest L3	
	L17A-4800 AA	2211	250	60	4800	5110	4500	2825/2550/2025	3150	5050	5650	
	L17A-5000 AA	2219	250	57	5000	5310	4600	2825/2550/2025	3350	5250	5850	
	L17A-5200 AA	2245	250	53	5200	5510	4600	2825/2550/2025	3550	5450	6050	
	L17A-5400 AA	2263	260	53	5400	5760	4800	2990/2650/2190	3750	5650	6250	
	L17A-5600 AA	2314	265	50	5600	5910	4800	2990/2650/2190	3950	5850	6450	
	L17A-5750 AA	2345	270	50	5750	6060	4950	3116/2800/2316	4100	6000	6600	
	L17A-5950 AA	2377	275	47	5950	6260	4950	3116/2800/2316	4300	6200	6800	
	L20A-4800 AA	2438	250	60	4800	5110	4500	2825/2550/2025	3150	5050	5650	
	L20A-5000 AA	2446	250	57	5000	5310	4600	2825/2550/2025	3350	5250	5850	
	L20A-5200 AA	2478	250	53	5200	5510	4600	2825/2550/2025	3550	5450	6050	
	L20A-5400 AA	2496	260	53	5400	5760	4800	2990/2650/2190	3750	5650	6250	
	L20A-5600 AA	2547	265	50	5600	5910	4800	2990/2650/2190	3950	5850	6450	
	L20A-5750 AA	2578	275	50	5750	6060	4950	3116/2800/2316	4100	6000	6600	
	L20A-5950 AA	2610	280	47	5950	6260	4950	3116/2800/2316	4300	6200	6800	
	L20A-6150 AA	2649	285	44	6150	6460	4950	3116/2800/2316	4500	6400	7000	
	L24A-4800 AA	2441	255	60	4800	5110	4500	2825/2550/2025	3150	5050	5650	
	L24A-5000 AA	2449	260	57	5000	5310	4600	2825/2550/2025	3350	5250	5850	
	L24A-5200 AA	2481	265	53	5200	5510	4600	2825/2550/2025	3550	5450	6050	
	L24A-5400 AA	2499	270	53	5400	5760	4800	2990/2650/2190	3750	5650	6250	
	L24A-5600 AA	2550	275	50	5600	5910	4800	2990/2650/2190	3950	5850	6450	
	L24A-5750 AA	2581	290	50	5750	6060	4950	3116/2800/2316	4100	6000	6600	
	L24A-5950 AA	2613	285	47	5950	6260	4950	3116/2800/2316	4300	6200	6800	
	L24A-6150 AA	2652	290	44	6150	6460	4950	3116/2800/2316	4500	6400	7000	
Hook height H1							1450					
Hook fold B							900					
Telescope A							1100					
Build height H2							198					
Spreader flap deployer S							4150					

We have always prioritised safety and user-friendliness for our products. The installation has many details and components that increase driver safety and facilitate use.

JOAB Försäljnings AB
 Östergårde Industriområde
 417 29 Gothenburg, Sweden
 Tel: +46 (0)31 705 06 00
 Fax: +46 (0)31 705 06 36
 info@joab.se