

**7243C**  
NEW AGE



**7243C**

**Ferrari**

A HYVA GROUP COMPANY

# 7243C



**Extension Quick System and Smart Extension Sequence**  
Fast, precise, safe

**Link on second boom**  
Boom negative angle allows access to confined spaces

**Link on column**  
Constant lifting capacity on all main boom positions

**Break the boundaries in performance and safety**

**Ergonomic control station and user-friendly interface**  
Comfortable, convenient and safe

**Always stable**  
More than 40 stabilizer combinations available



**7" color display**  
Simple and quick access to all the functions and information

**Vertical stabilizer levers**  
Safe and fast. Excellent supervision of stabilizing operation

**Ergonomic control station engineered for maximum operator comfort and ease of operation**

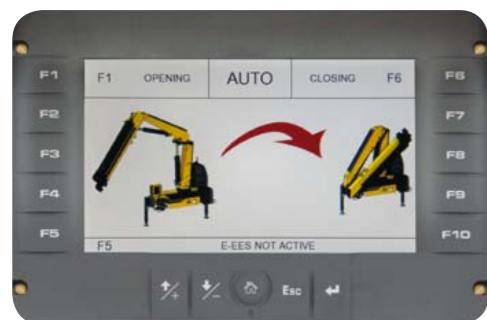
### Dynamic Load Diagram



**Crane lifting capacity always under control in all stabilizer positions.**  
After the truck has been stabilized, the operator selects the load weight to be lifted. The display shows the permitted crane outreach based on the truck stability and load selected.

- Improved efficiency
- Easy to use
- Optimised safety

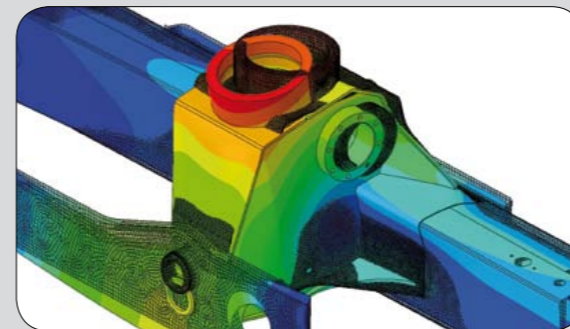
### Magic Touch



**Crane Automatic folding/unfolding.**  
This system allows the operator to unfold the crane to a working position and fold the crane from any position to transport position by pressing a single button on the radio transmitter or display.

- Easy to start and close
- Save time
- Increased productivity and safety

### High-tech development



- Structures optimised for strength, weight and speed

### Top Protection



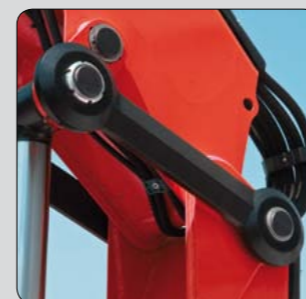
- High value retention
- Top reliability

### Negative angle

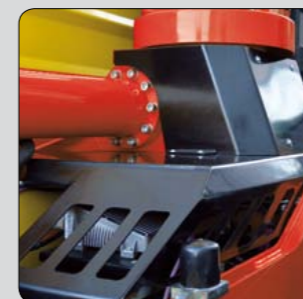


- More versatile
- Easier access in confined and low spaces

### Functional Aesthetic



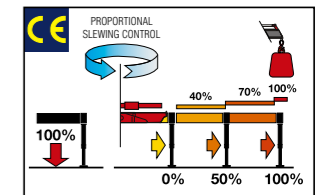
Forged double linkages on column and 2nd boom



Hex Deck cover on base

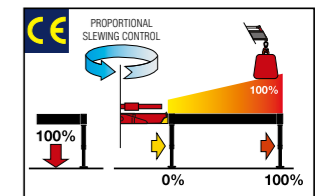
### Crane control system

#### F3XL



With a 3" TFT display and ergonomic keyboard, the crane operator can select optimum functional parameters. The system controls the stability with 2-step beam outreach monitoring and continuous slewing control.

#### F4XL+TOP



A 7" color display with integrated keyboard gives the operator a higher level of awareness of the crane operation and allows selection of the best parameters for effective use. The system detects the exact position of the beams and proportionally calculates the stability.

### Wide range Radio selection



Hetronic Not CE



Hetronic CE Basic



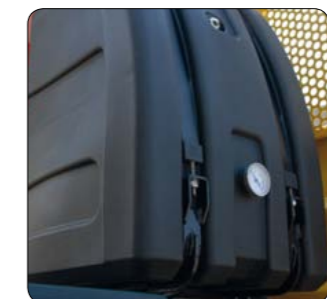
Scanreco



Hetronic CE Graphic



Powered by Danfoss



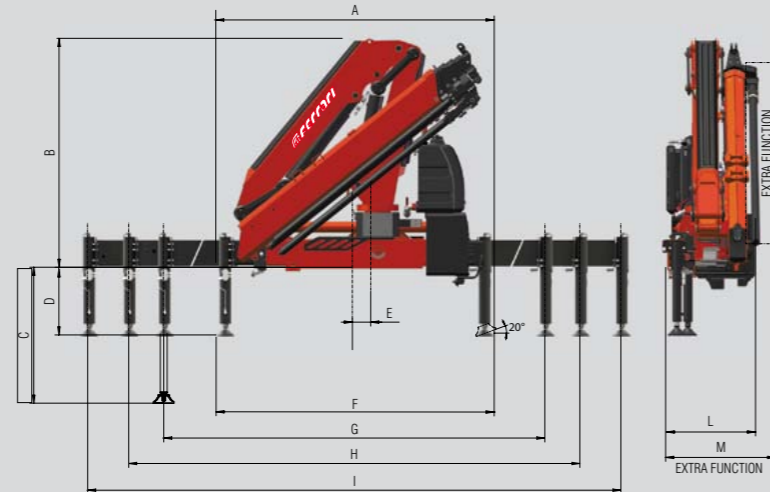
High volume oil tank made in sandwich-structured materials (PEX and PA6)



Robust column design and hoses cover

# 7243C *Technical data*

	Lifting Moment	Swiveling Angle	Working pressure	Oil tank capacity	Max Oil flow	Max lifting height	Standard crane weight
	tm	°	bar	l	l/min	m	kg
A2	22,5	415	315	130	80	11,7	2600
A3	22,1	415	310	130	80	13,8	2740
A4	21,2	415	310	130	80	15,9	2880
A5	20,4	415	310	130	80	18,1	3005
A6	20,0	415	310	130	80	20,3	3110
A7	19,6	415	310	130	80	22,5	3230
A8	19,3	415	310	130	80	24,8	3320
A4J3	17,8	415	325	130	80	24,1	3540
A5J3	16,9	415	330	130	80	25,6	3495
A6J2	10,4	415	325	130	80	25,9	3385

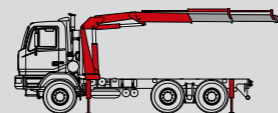


	A2	A3	A4	A5	A6	A7	A8	A4J3	A5J3	A6J2
A	2500	2500	2500	2500	2500	2500	2500	2520	2500	2500
B	2300	2300	2300	2300	2300	2300	2300	2715	2615	2605
C	1348	1348	1348	1348	1348	1348	1348	1348	1348	1348
D	666	666	666	666	666	666	666	666	666	666
E	150	150	150	150	150	150	150	150	150	150
F	2520	2520	2520	2520	2520	2520	2520	2520	2520	2520
G	4860	4860	4860	4860	4860	4860	4860	4860	4860	4860
H	5500	5500	5500	5500	5500	5500	5500	5500	5500	5500
I	7420	7420	7420	7420	7420	7420	7420	7420	7420	7420
L	935	935	935	935	935	1005	1005	1055	1055	1055
M	1055	1055	1055	1055	1055	-	-	-	-	-

<b>A2</b>	kg	5325	3620	2745															
	m	4,23	6,13	8,03															
<b>A3</b>	kg	5235	3520	2640	2090	1605	1300	1000											
	m	4,23	6,13	8,03	10,06	12,17	14,39	16,60											
<b>A4</b>	kg	4940	3295	2435	1900	1570	1240	1000	605										
	m	4,31	6,21	8,28	10,14	12,17	14,39	16,60	18,85										
<b>A5</b>	kg	4660	3075	2245	1725	1405	1180	900	750	535									
	m	4,39	6,29	8,19	10,22	12,25	14,38	16,60	18,85	21,13									
<b>A6</b>	kg	4475	2930	2115	1600	1280	1055	905	605	535									
	m	4,48	6,38	8,28	10,31	12,34	14,47	16,60	18,85	21,13									
<b>A7</b>	kg	4315	2800	1995	1485	1160	940	795	695	570	350								
	m	4,56	6,46	8,36	10,39	12,42	14,55	16,68	18,85	21,13	23,23								
<b>A8</b>	kg	4170	2690	1900	1395	1070	850	705	605	535	450								
	m	4,65	6,55	8,45	10,48	12,51	14,64	16,77	18,93	21,13	23,23								
<b>A4J3</b>	kg				660	570	500	450	375	315									
	m				15,16	16,86	18,61	20,36	22,25	24,16									
<b>A5J3</b>	kg				530	475	430	400	345	300									
	m				17,21	18,77	20,33	21,89	23,55	25,33									
<b>A6J2</b>	kg				540	500	460												
	m				19,33	20,71	22,19												

## Standard

- Designed in accordance with EN12999
- Design class: HC1-HD4
- Cross controls
- Flanged valves
- Oil tank
- Manually extendable stabilizers
- Fixed stabilizer cylinders
- Swivel stabilizer foot
- Centralized greasing system
- EQS Extension Quick System
- SDV Smooth Descent Valve
- Red Power
- F3XL Crane control system (CE)



Recommended truck M.T.T. ton 19 - G.V.W. ton 19



## One model, many applications



Waste handling



Construction



Fence posts, poles and landscaping



With winch



# 7243C

## NEW AGE



ISO 9001 · ISO 14001

Quality and environmental certified

# **FERRARI**

**A HYVA GROUP COMPANY**

### F.lli FERRARI

Via Einstein, 8  
42028 Poviglio (RE) Italy  
Tel. +39 0522/486308  
Fax +39 0522/486330  
info@flliferrari.it  
marketing@flliferrari.it  
www.flliferrari.com

Dealer

Data, descriptions, and illustrations pertain only and uniquely to models sold at the time of printing of this brochure. After the date of printing, this information is purely indicative and not binding upon F.lli Ferrari. Future modifications are solely at the discretion of F.lli Ferrari and are always in compliance with applicable and pertinent safety standards. To obtain updated data, descriptions, and illustrations, contact the manufacturer or your reseller. Cranes manufactured and/or marketed by F.lli Ferrari.