

**7153C**  
NEW AGE



**7153C**

**FERRARI**

A HYVA GROUP COMPANY

# 7153C

**Link on second boom**

Efficiency in confined spaces thanks to negative angle

**Extension Quick System and Smart Extension Sequence**

Fast, precise, safe

**Link on column**

Constant lifting capacity on all main boom positions

**Forged hook attachment**

Ruggedness and durability in all applications

**425° Slewing angle**

The widest slewing angle for medium sized cranes

**Ergonomic control station and user-friendly interface**

Comfort, easy to use and safe

**Always stable**

More than 40 stabilizer combinations available

**Break the boundaries in performance, safety and neatness**

**Ferrari**



**7" color display**  
Simple and quick access to all the functions and information

**Vertical stabilizers levers**  
Safe and fast. Excellent supervision of stabilizing operation

**Control station distinguished by operator comfort and user-friendly interface derived from dedicated ergonomic and user preference studies**

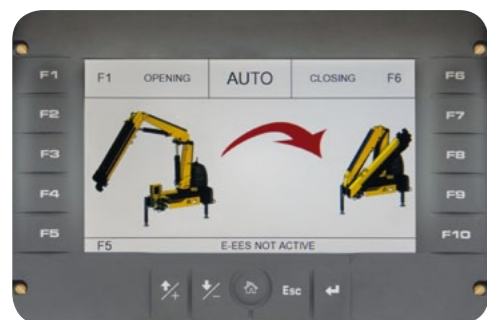
### Dynamic Load Diagram



**Crane lifting capacity always under control in all stabilizer positions.**  
After the stabilization, operator can select the load to be lifted. Display shows the permitted crane outreach based on the stability and the load selected.

- Improve the efficiency loading/unloading cycle
- Easy to use and safety optimised

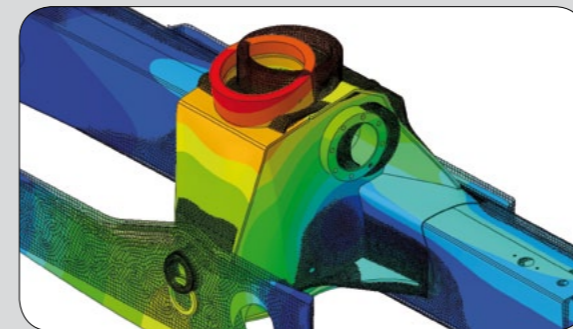
### Magic Touch



**Crane Automatic folding/unfolding.**  
System allows driver to open the crane from fold position to working position and back to transporting position by the pressure of a single lever on radio transmitter (or a button on the display).

- Easy to start and close
- Save time, increase productivity and safety

### High tech development



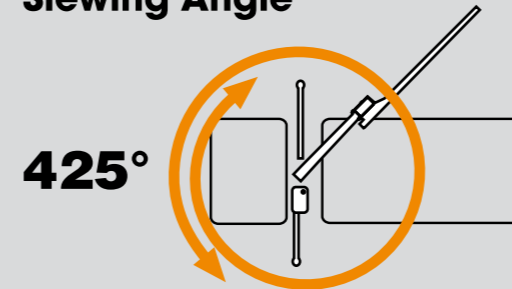
- Structures optimised for strength, weight and speed

### Top Protection



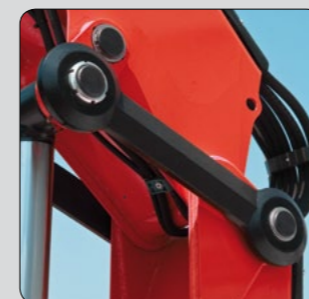
- High value retention
- Top reliability

### Slewing Angle

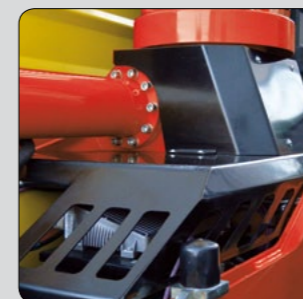


- The widest slewing angle for medium sized cranes
- Top efficiency and easy to use

### Functional Aesthetic



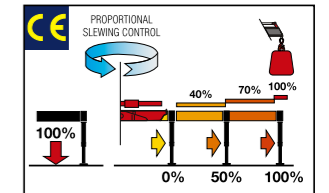
Forged double linkages on column and 2nd boom



Hex Deck cover on base

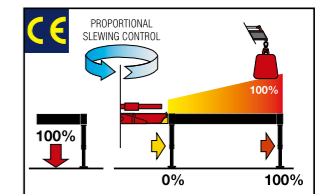
### Crane control system

#### F3XL



With a 3" TFT display and ergonomic keyboards, the operator can supervise the crane working and select the best parameters for effective use. The system controls the stability with 3-step beam outreach monitoring and continuous slewing control.

#### F4XL+TOP



A 7" color display with integrated keyboard gives the operator a higher level of awareness of the crane operation and allows selection of the best parameters for effective use. The system detects the exact position of the beams and proportionally calculates the stability.

### Wide range Radio selection (Standard)



Hetronic CE Basic



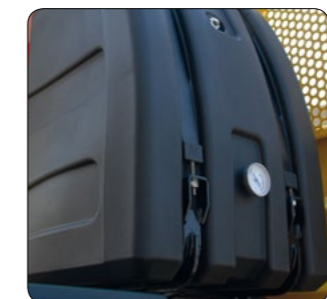
Scanreco



Hetronic CE Graphic



Powered by Danfoss



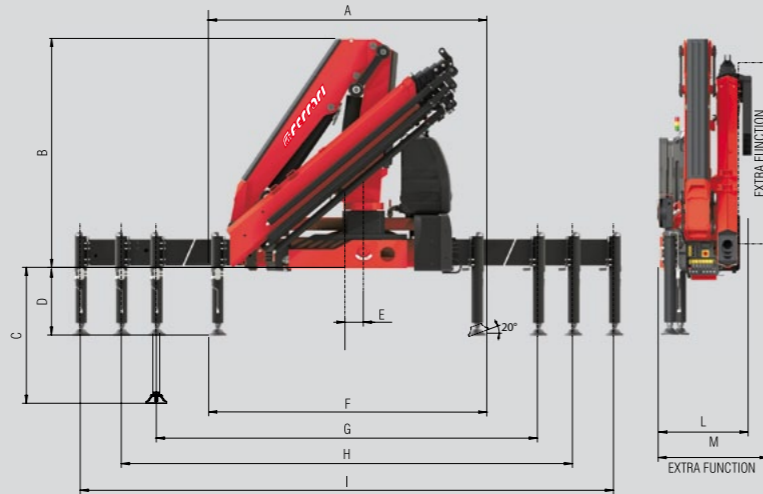
High volume oil tank made in sandwich-structured materials (PEX and PA6)



Robust column design and hoses cover

# 7153C Technical data

	Lift Moment	Slewing Angle	Working pressure	Oil tank capacity	Max Oil flow	Max lifting height	Standard crane weight
	tm	°	bar	l	l/m	m	kg
A2	13,9	425	325	130	60	12,2	1820
A3	13,5	425	325	130	60	14,4	1935
A4	13,1	425	325	130	60	16,5	2040
A5	12,8	425	325	130	60	18,8	2140
A6	12,4	425	325 </tr				

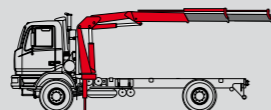


	A2	A3	A4	A5	A6
A	2450	2450	2450	2450	2450
B	2330	2330	2330	2330	2330
C	1362	1362	1362	1362	1362
D	670	670	670	670	670
E	160	160	160	160	160
F	2445	2445	2445	2445	2445
G	4200	4200	4200	4200	4200
H	5400	5400	5400	5400	5400
I	6600	6600	6600	6600	6600
L	817	817	817	890	890
M	960	960	960	1020	1020

Model	kg	3040	2075	1575	1165	870	655		
A2	m	4,58	6,53	8,48	10,86	12,91	15,06		
Model	kg	2900	1950	1460	1165	870	655	485	
A3	m	4,66	6,61	8,56	10,61	12,91	15,06	17,21	
Model	kg	2765	1835	1350	1050	870	655	485	395
A4	m	4,75	6,7	8,65	10,7	12,75	15,06	17,21	19,31
Model	kg	2640	1730	1250	955	775	655	485	395
A5	m	4,83	6,78	8,73	10,78	12,83	14,98	17,21	19,31
Model	kg	2530	1635	1160	865	685	565	485	395
A6	m	4,91	6,86	8,81	10,86	12,91	15,06	17,21	19,31

## Standard

- Multifunctional radio remote control
- Sauer Danfoss PVG32
- Load limit device
- P-PB Proportional Power Boost
- Flanged valves
- Designed in accordance with EN12999
- Design class: HC1-HD5
- Oil tank
- Manually extendable stabilizers
- Internal stabilizers pipes
- Fixed stabilizer cylinders
- Swivel stabilizer foot
- Centralized greasing system
- EQS Extension Quick System
- SDV Smooth Descent Valve
- Red Power
- F3XL Crane control system (CE)



Recommended truck M.T.T. ton 12 - G.V.W. ton 12

With 3 tm fly Jib



## One model, many applications

Brick handling application



Waste handling application



Construction application



Fence posts, poles and landscaping application



With winch



# 7153C

## NEW AGE



Quality and environmental certified



### F.lli FERRARI CORPORATION S.p.A.

Via Einstein, 8  
42028 Poviglio (RE) Italy  
Tel. +39 0522/486308  
Fax +39 0522/486330  
info@flliferrari.it  
marketing@flliferrari.it  
www.flliferrari.com

Dealer

Data, descriptions, and illustrations pertain only and uniquely to models sold at the time of printing of this brochure. After the date of printing, this information is purely indicative and not binding upon F.lli Ferrari. Future modifications are solely at the discretion of F.lli Ferrari and are always in compliance with applicable and pertinent safety standards. To obtain updated data, descriptions, and illustrations, contact the manufacturer or your reseller. Cranes manufactured and/or marketed by F.lli Ferrari.