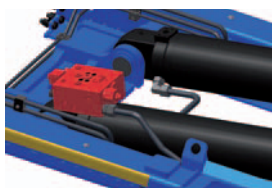
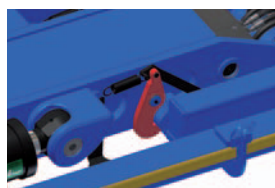


An even better hook lift

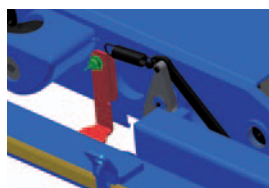
We were the first with low-built hook lifts, and now we are going even lower. With our new LA hook lift we have introduced a number of small improvements that together give a hook lift that is even lighter, even more environmentally friendly and more profitable.



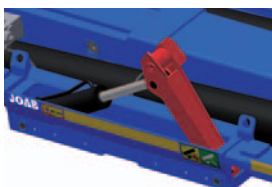
Combined regenerative, load retaining and quick lowering valve.



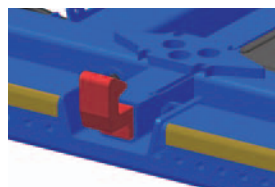
Mechanical centre pivot.



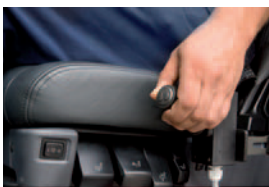
Lowering brake.



Patented tipping torque amplifier.



External hydraulic body lock.



Pneumatic control lever for tipping and shifting motions.

QUICK FACTS

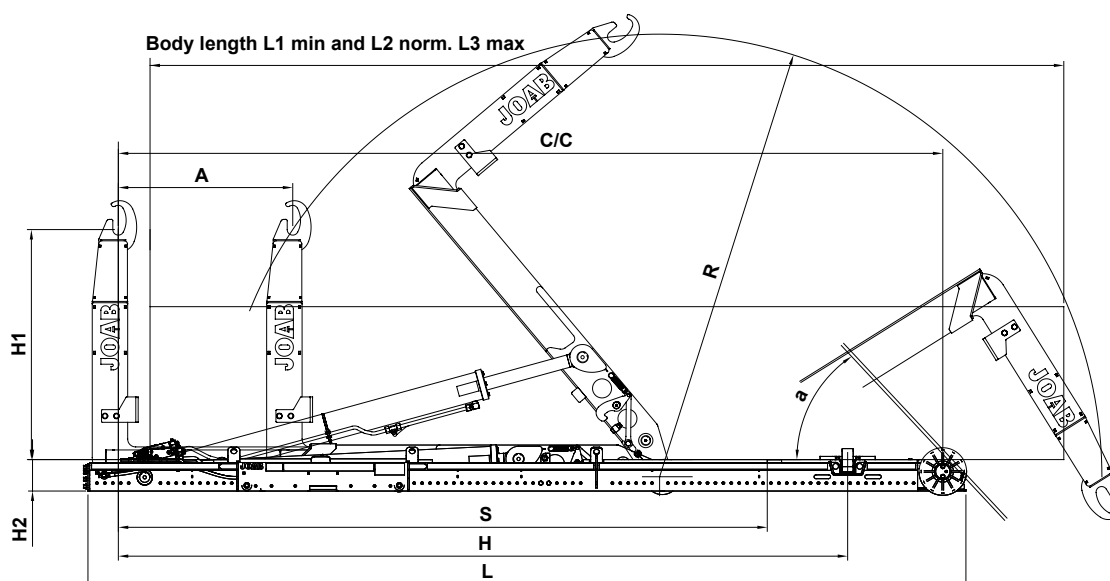
- Swedish made.
- 17, 20 and 24 tons lifting and tipping capacity.
- Lower superstructure and operational weight give a 2 % increase in volume and weight load capacity.

FACTS IN DETAIL

- Designed for 3 and 4 axle chassis.
- Lower weight because the hook lift is made of high-strength steel. Means greater payload.
- Designed for a high tipping angle even at long hook lifts. Makes releasing masses easier.
- Supplied with our patented tipping torque amplifier that increases the lifting force from the off and relieves the hook lift. The auxiliary lifting arms also have integrated rollers that enable horizontal friction free transfer of the load carrier.
- Automatic lowering brake that dampens the speed at the end of the lowering motion.
- Market adapted hook height, SMS, DIN etc.
- Robust construction for increased durability and long service life.
- Extensive equipment program designed for your specific needs.
- Prepared for the Cameleont swap system.
- Included in our FBS construction concept, which consists of corrosion resistant products (painted at assembly). FBS also means a shorter lead time.
- 70 % water based paint when painting.
- Gives you, the customer, many years of profitable ownership.

ADDITIONAL EQUIPMENT

- | | | |
|---|---|--|
| <ul style="list-style-type: none"> • Quick tipping • Quick lowering • Quick operation • Automatic cycle • Front wall/Tool mounting • Spreader flap deployer | <ul style="list-style-type: none"> • Radio control • Crane body studs • Internal hydraulic body lock • Mechanical body lock • Sleeves in front wall • SMS ram | <ul style="list-style-type: none"> • Height adjustable hook • Stainless steel oil tank • Tipping hydraulics • Hydraulic socket in hook post • Sensor for short body • Mechanical or pneumatic hook locking |
|---|---|--|



					Dimensions mm				Body length mm		
	Type	Weight Kg	Pressure Bar	Tipping angle a°	C/C	L	Hydra-lic lock	Radiis R	Shortest L1	Longest with min. overhang L2	Longest L3
	L17-4800 AA	2038	250	60	4800	5110	4500	2825	4050	5050	5650
	L17-5000 AA	2046	250	57	5000	5310	4600	2825	4250	5250	5850
	L17-5200 AA	2072	250	53	5200	5510	4600	2825	4450	5450	6050
	L17-5400 AA	2090	260	53	5400	5760	4800	2990	4650	5650	6250
	L17-5600 AA	2141	265	50	5600	5910	4800	2990	4850	5850	6450
	L17-5750 AA	2172	270	50	5750	6060	4950	3116	5000	6000	6600
	L17-5950 AA	2204	275	47	5950	6260	4950	3116	5200	6200	6800
	L20-4800 AA	2265	250	60	4800	5110	4500	2825	4050	5050	5650
	L20-5000 AA	2273	250	57	5000	5310	4600	2825	4250	5250	5850
	L20-5200 AA	2305	250	53	5200	5510	4600	2825	4450	5450	6050
	L20-5400 AA	2323	260	53	5400	5760	4800	2990	4650	5650	6250
	L20-5600 AA	2374	265	50	5600	5910	4800	2990	4850	5850	6450
	L20-5750 AA	2405	275	50	5750	6060	4950	3116	5000	6000	6600
	L20-5950 AA	2437	280	47	5950	6260	4950	3116	5200	6200	6800
	L20-6150 AA	2476	285	44	6150	6460	4950	3116	5400	6400	7000
	L24-4800 AA	2268	255	60	4800	5110	4500	2825	4050	5050	5650
	L24-5000 AA	2276	260	57	5000	5310	4600	2825	4250	5250	5850
	L24-5200 AA	2308	265	53	5200	5510	4600	2825	4450	5450	6050
	L24-5400 AA	2326	270	53	5400	5760	4800	2990	4650	5650	6250
	L24-5600 AA	2377	275	50	5600	5910	4800	2990	4850	5850	6450
	L24-5750 AA	2408	290	50	5750	6060	4950	3116	5000	6000	6600
	L24-5950 AA	2440	285	47	5950	6260	4950	3116	5200	6200	6800
	L24-6150 AA	2479	290	44	6150	6460	4950	3116	5490	6400	7000
Hook height H1	1450										
Telescope A	1100										
Build height H2	198										
Spreader flap deployer S	4150										

We have always prioritised safety and user-friendliness for our products. The installation has many details and components that increase driver safety and facilitate use.

JOAB Försäljnings AB
 Östergärde Industriområde
 417 29 Gothenburg, Sweden
 Tel: +46 (0)31 705 06 00
 Fax: +46 (0)31 705 06 36
 info@joab.se

www.joab.se